



AIA Albuquerque

2016

Design Awards

Citation Award

General Design

San Juan College

School of Energy

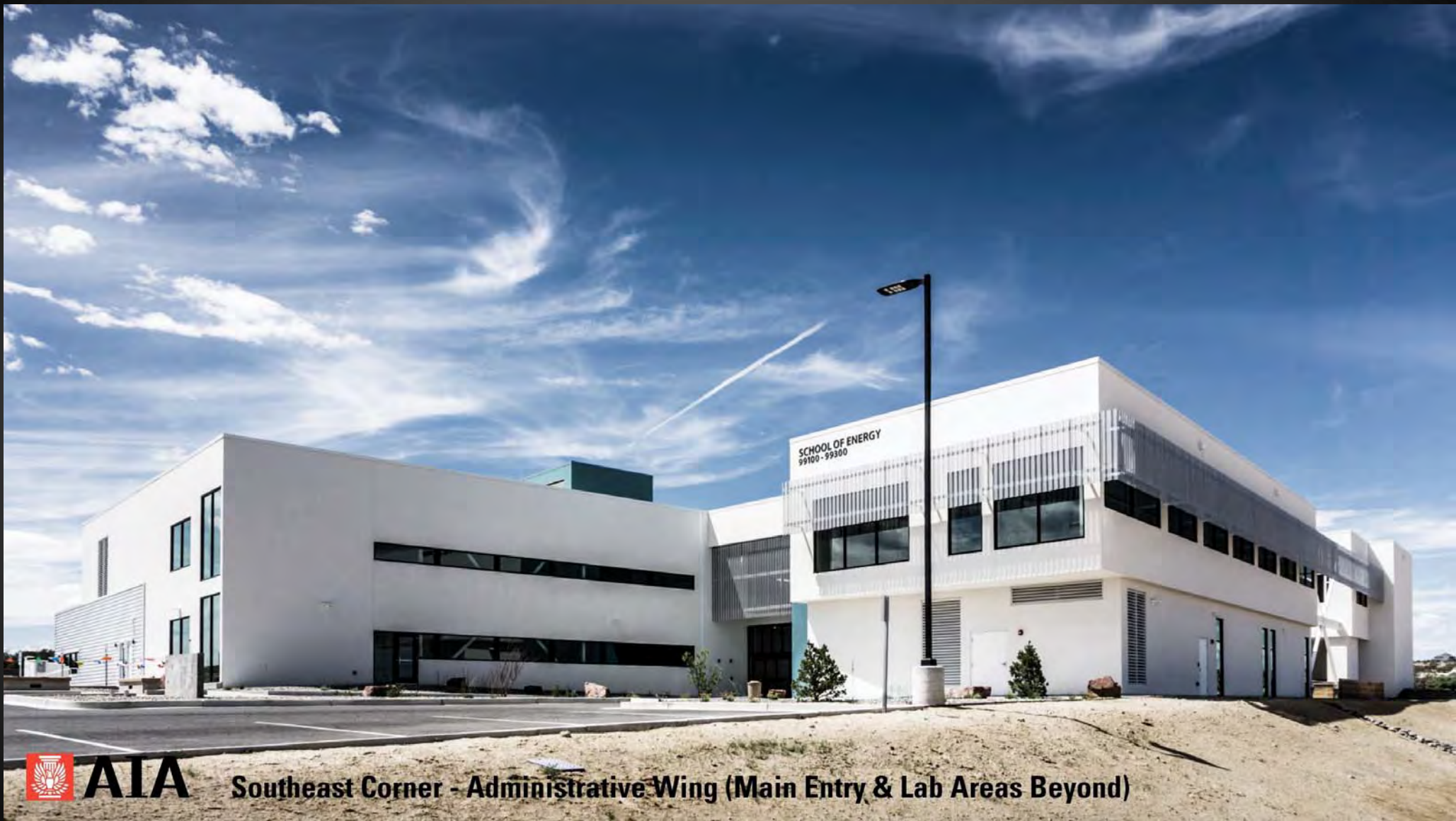
Dekker/Perich/Sabatini



AIA

SAN JUAN COLLEGE | SCHOOL OF ENERGY

Farmington, NM | September 2015

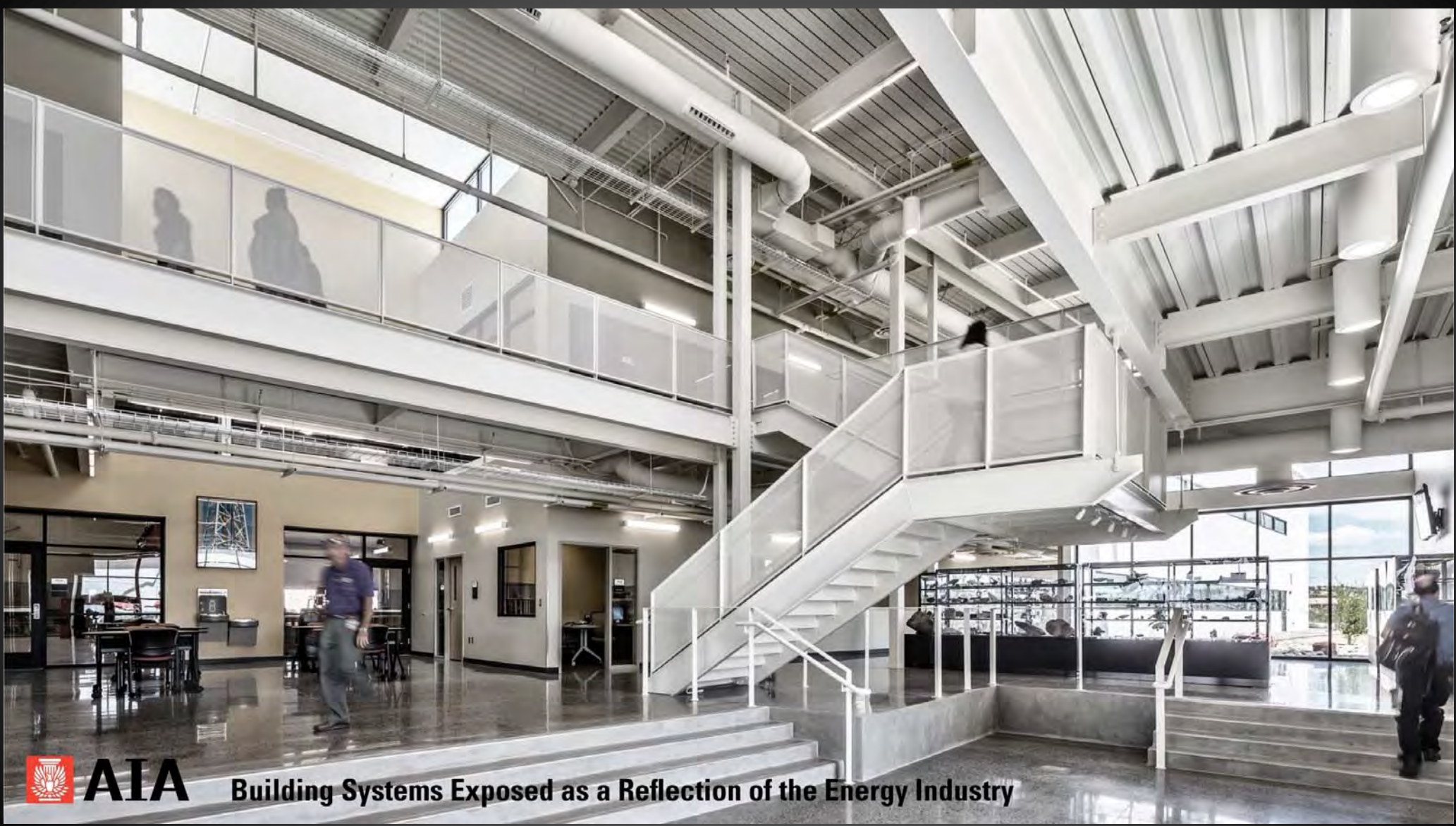


AIA

Southeast Corner - Administrative Wing (Main Entry & Lab Areas Beyond)

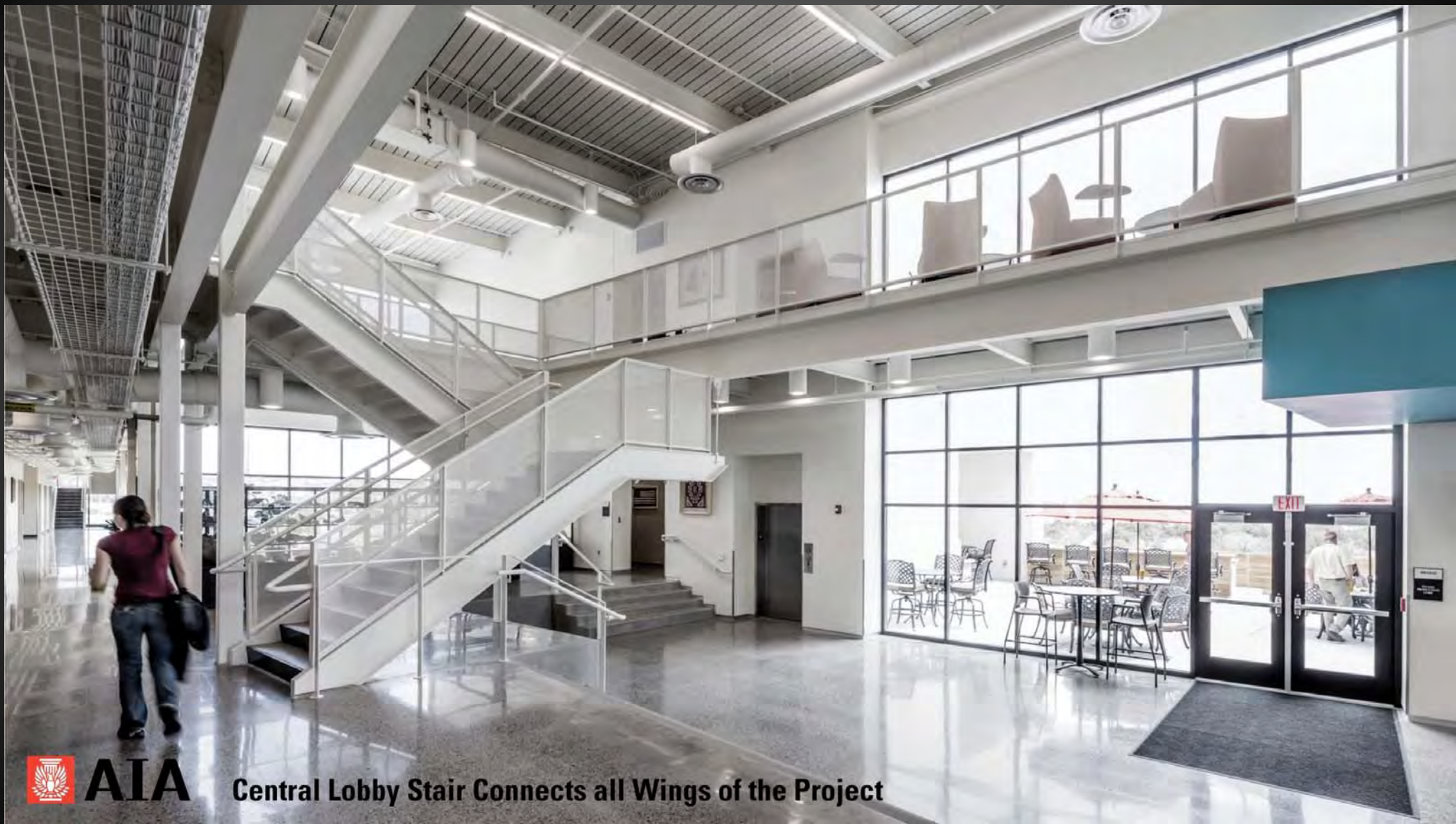
**The 2-story industrial lobby
with central reception,
connecting bridges, and
ample daylight**





AIA

Building Systems Exposed as a Reflection of the Energy Industry



AIA

Central Lobby Stair Connects all Wings of the Project



High-bay lab
spaces with lab
equipment



AIA



Every lab space
is visible from
classrooms
above



AIA



Main Entry



AIA

Citation Award

General Design

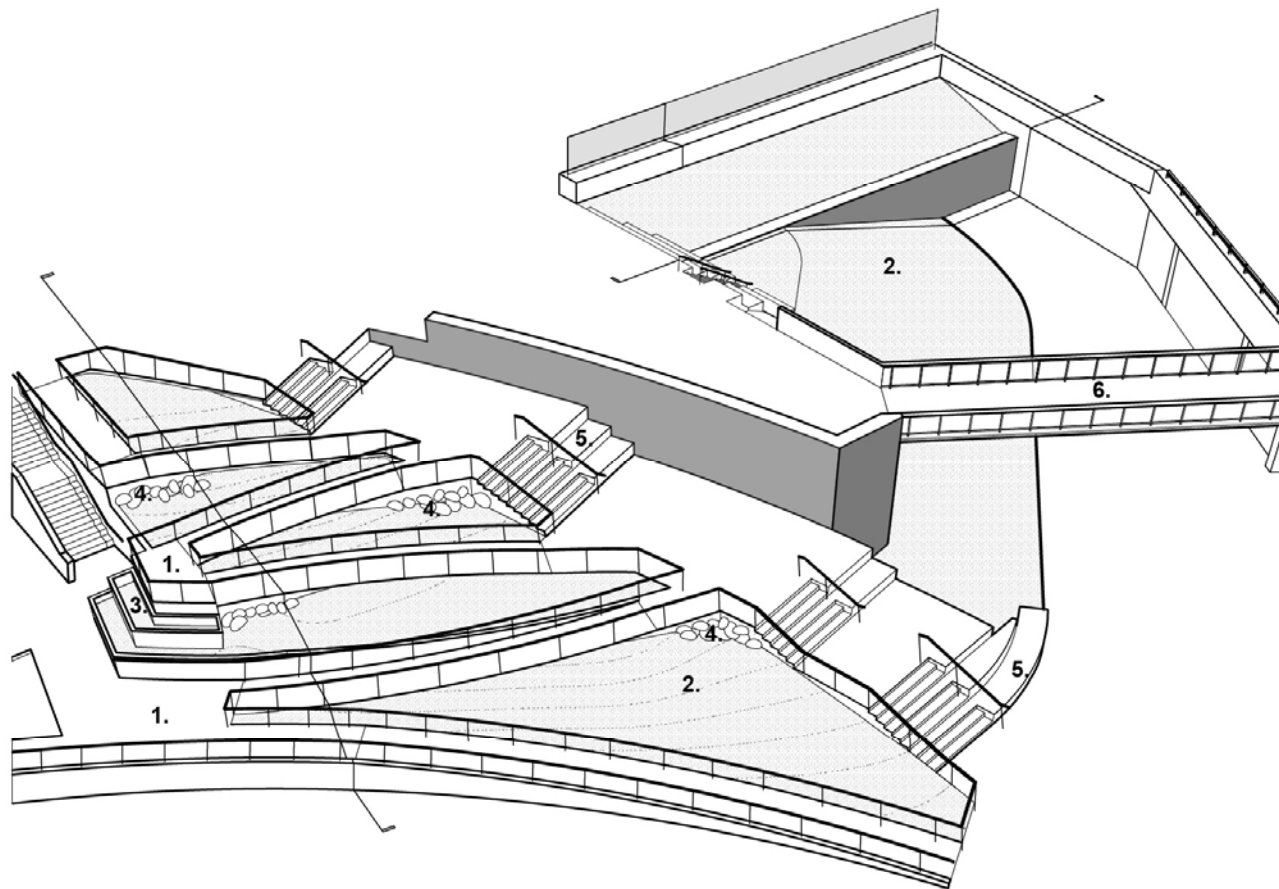
CNM Main Campus Wayfinding

Studio Collaboration

CNM Main Campus Wayfinding

ALBUQUERQUE, NEW MEXICO 2016





1. CONCRETE RAMP
2. SLOPED PLANTING AREA
3. TERRACED PLANTERS
4. LANDSCAPE BOULDERS
5. CONCRETE TERRACE BENCHES
6. ENTRY BRIDGE TO SSC BUILDING

CNM Main Campus Wayfinding
TERRACE GARDEN / RAMP PERSPECTIVE



CNM Main Campus Wayfinding
MONUMENT SIGN AT MAIN STREET INTERSECTION



CNM Main Campus Wayfinding
GATEWAY PLAZA / FRONT DOOR



CNM Main Campus Wayfinding
STEPPED GARDEN / BLEACHER SEATING



CNM Main Campus Wayfinding
WATER HARVESTER



CNM Main Campus Wayfinding
ENTRY BRIDGE

CNM Main Campus Wayfinding

MAIN ENTRY PLAZA



Citation Award

General Design

New Belen Family School
Belen, NM

Vigil & Associates
Architectural Group

The New Belen Family School

Belen, New Mexico | June 2015





Central Courtyard Facing South
Student Planter Beds | Grassy Knoll

Central Courtyard
Facing East
Indoor-Outdoor Integration





Extended Learning Area Looking Out to Courtyard
The Extended Learning Area opens to the courtyard to take advantage of the mild, arid climate for performances and gatherings



Entrance Vestibule
*Daylit, Inviting Interiors with
Simple Materials Palette*



Classroom

To maximize space, each classroom is utilized full time, split between two half-time sessions and are designed for maximum flexibility to accommodate a range of teaching methodologies, group sizes and technologies in an open, daylit environment.



Courtyard Facing Southeast
Expression of Interior-Exterior Integration
Circulation Loggias | Natural Daylighting

South Building Elevation

The building mass and proportions are broken down into a cluster of forms to reflect the scale of the surrounding community.



Citation Award

General Design

URENCO
Campus Commons

Dekker/Perich/Sabatini

URENCO CAMPUS COMMONS

Eunice, New Mexico
Completed: February, 2015



AIA

URENCO CAMPUS COMMONS

URENCO USA

URENCO USA



Size:
32,083 Sqft.

Structure:
Steel post & beam system
Braced frame lateral system
Spread footing foundation

Materials & Systems
Steel post & beam
Braced frame lateral system

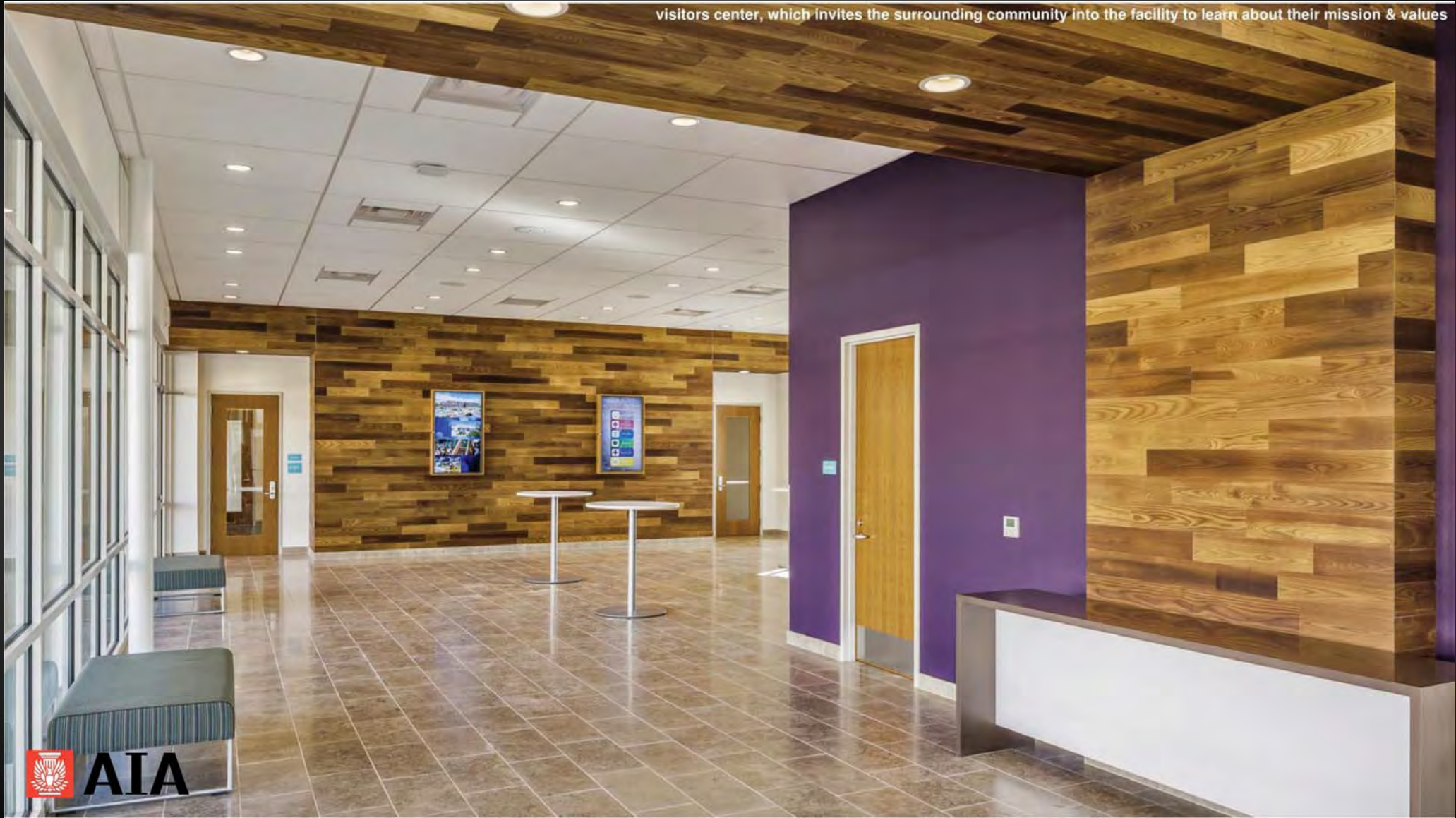
Site Features
Prominent raised location
Large courtyard
Fountain and exterior dining



AIA

View of employee entry glass volume, looking south toward main parking area.

visitors center, which invites the surrounding community into the facility to learn about their mission & values



AIA



Stair connecting employees to the 2nd floor business offices



AIA

View within main courtyard, looking east toward dining area. Stone fountain provides relaxing sounds of water



View of main dining area, with connection to outdoor cafe space and main courtyard

URENCO
EUNICE | NM

URENCO USA



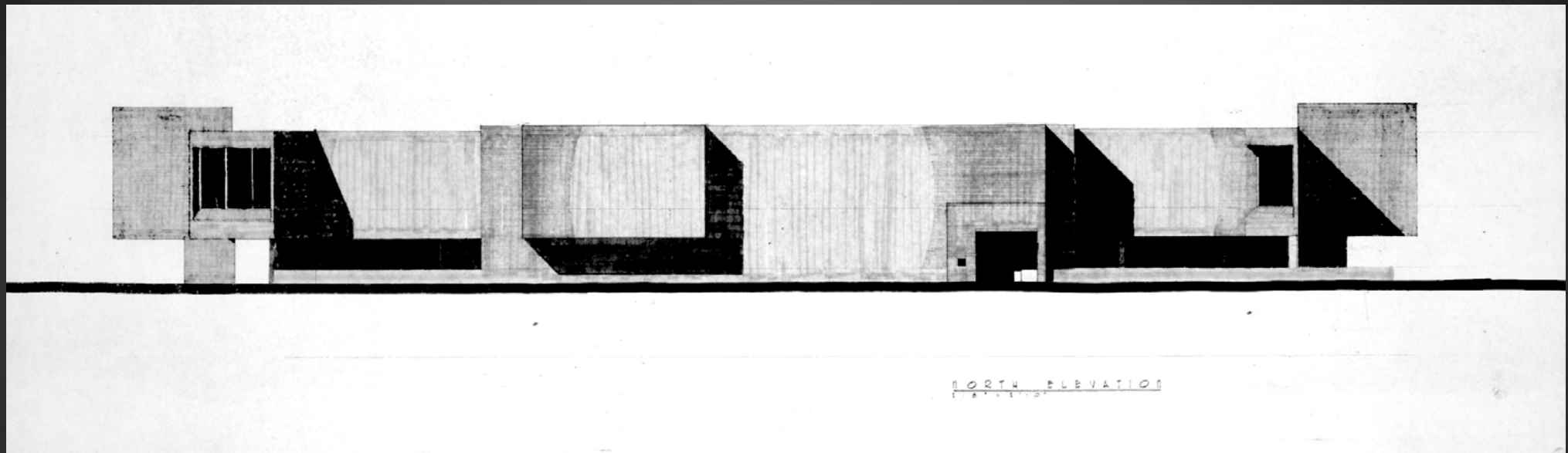
AIA

Citation Award

25 Year Award

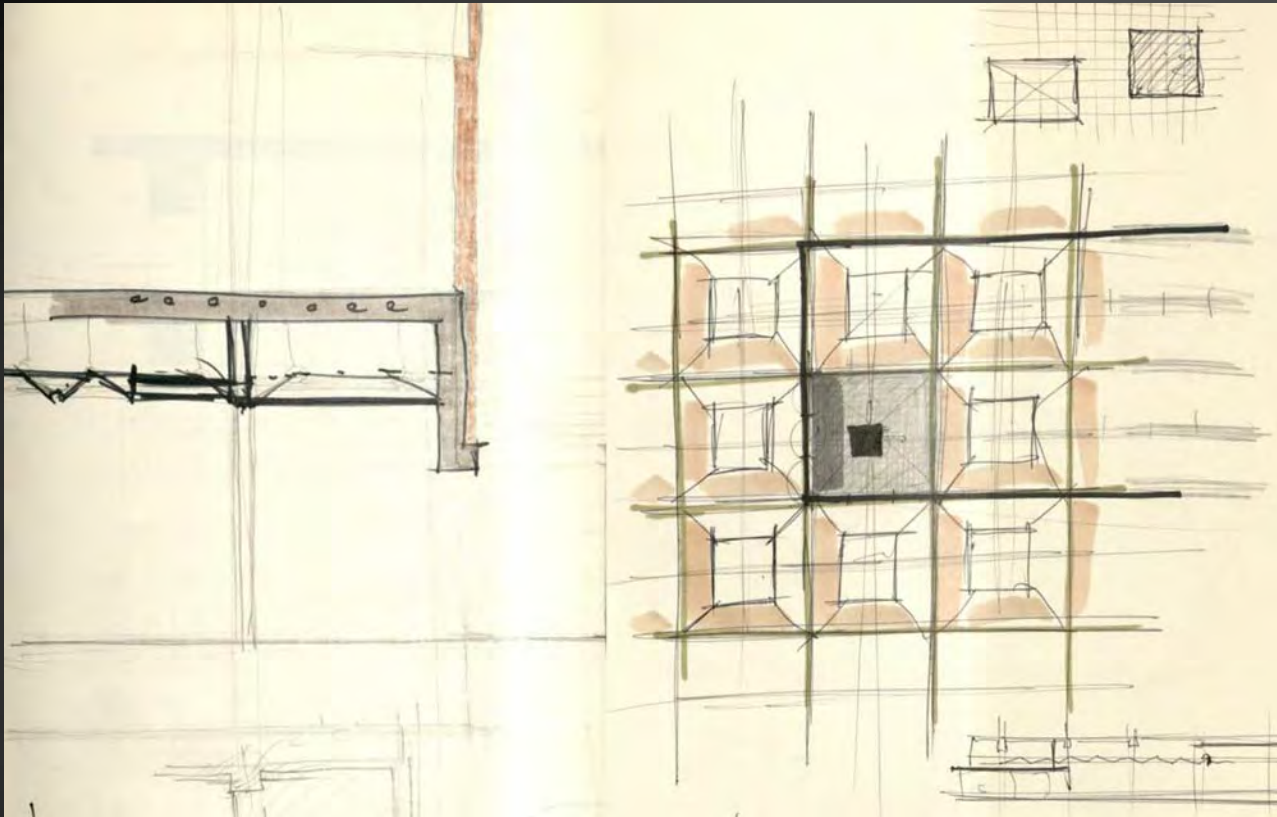
Albuquerque Main Library

SMPC Architects



Building Elevation; 1975





Ceiling and Lighting Concept sketch; 1975



Flexible Space; 1975



Flexible Space; 1975



Flexible Space; 2016



Ground Floor Reading Space; 1975



Ground Floor Reading Space; 2016



South East Window Projection; 1985



East Cantilevered Volume; 2016



Children's Library; 2016

Merit Award

Remodel and Adaptive Reuse

Ernie Pyle Middle School Fine Arts Renovation

Baker Architecture + Design

Ernie Pyle Middle School FINE ARTS RENOVATION

Albuquerque, New Mexico
February 2016





The existing classrooms were dark and uninviting. The lack of natural light along with an unorganized floor plan made the building inefficient and un-inspiring.



- A. Existing Drama Classroom
- B. Existing Music Classroom
- C. Existing Fine Art Classroom
- D. Existing Chorus Classroom

The existing exterior lacked a clear entry and a presence within the campus. A large portable building blocked the main view from the adjacent parking lot as well as the path to the Cafeteria Building to the north.



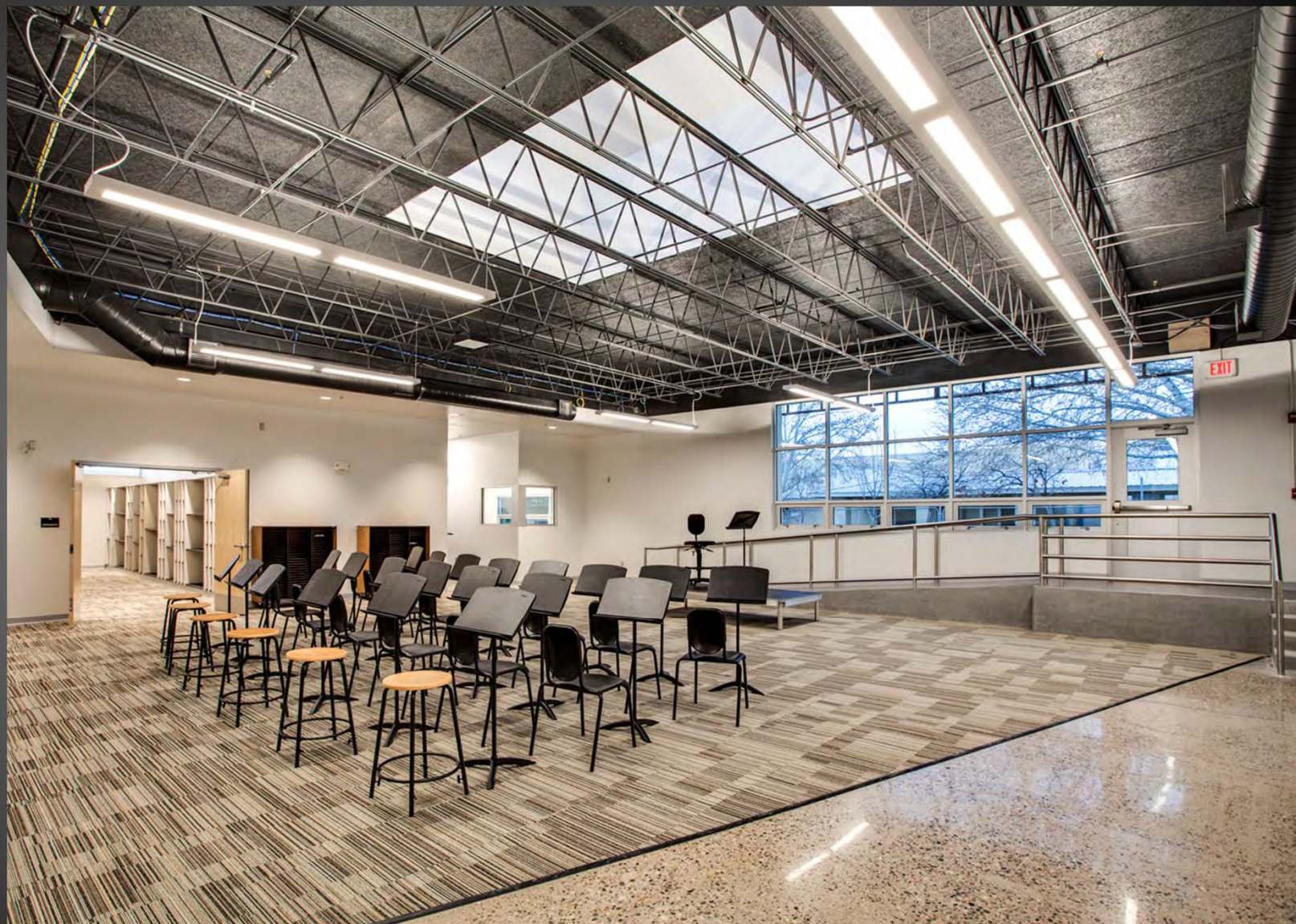
- A. Existing view from the northeast
- B. An existing portable building blocked the path to the cafeteria building
- C. Existing South elevation
- D. Existing entry to the Fine Art Classroom

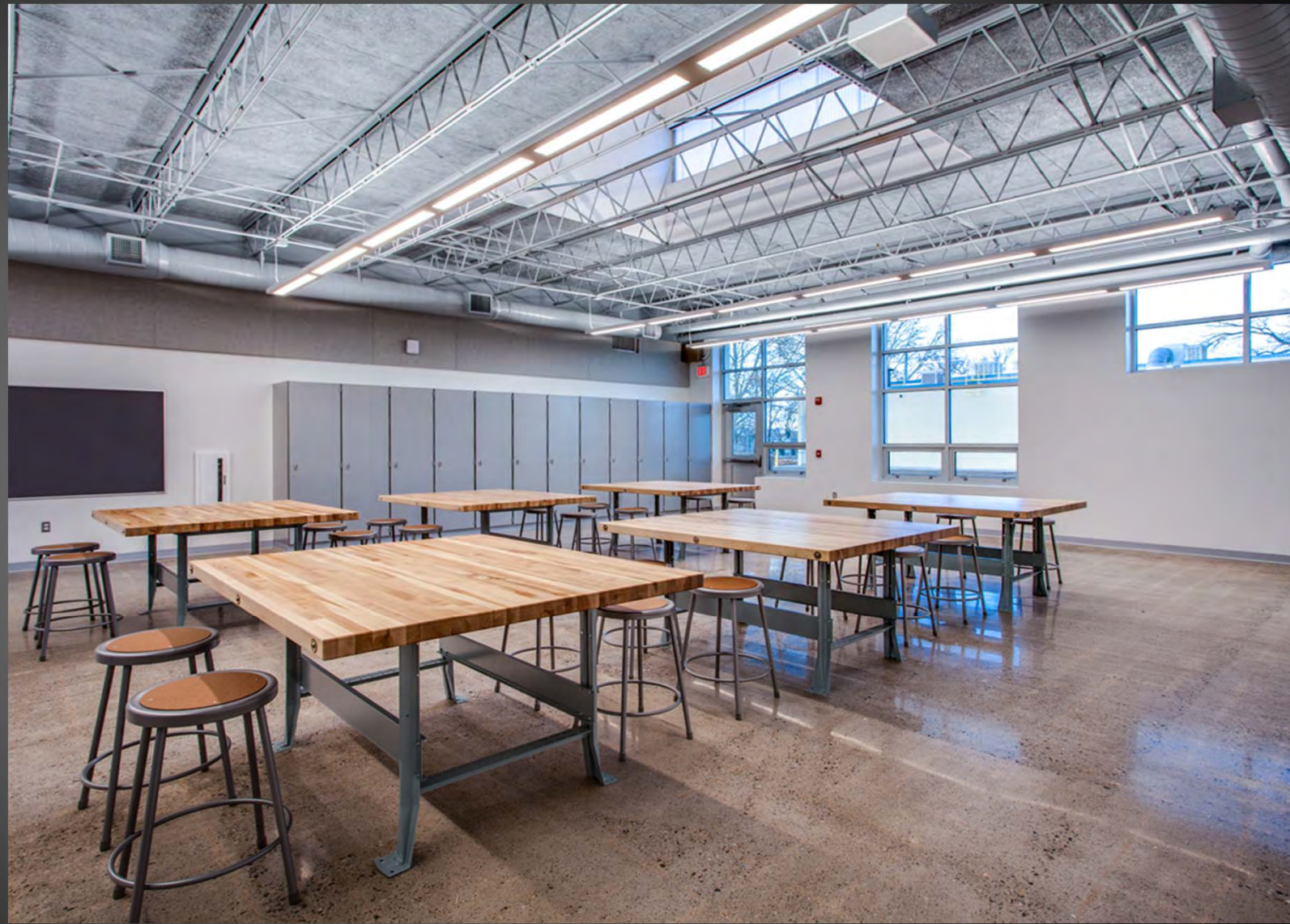




View of east / front elevation

The Music Classroom provides students and teachers with a large instrument storage closet and ample practice rooms. The classroom also opens onto the exterior stage for outdoor class time or performances.





View of Fine Arts Classroom



View of the Drama Classroom. A new concrete stage runs the length of the space and flows out onto the outdoor stage.



View of the Chorus Classroom

Merit Award

Remodel and Adaptive Reuse

SARABANDE
Bed and Breakfast

Jon Anderson Architects

BEFORE:
VIEW FROM
STREET OF
EXISTING BUILDING
PRIOR TO
RENOVATION



BEFORE:
SHOWING PARAPET
ORNAMENTATION
REMOVED AND
WINDOW
OPENINGS READY
TO BE ENLARGED





MAIN ENTRY PORTAL
FROM PARKING AREA
WITH GATES AND WIRE
MESH SCRIMS



CUSTOM ENTRY GATES
WITH COURTYARD, BARN
DOORS, AND POOL
BEYOND

BRICK COURTYARD
LOOKING WEST WITH
ZAGUAN AND POOL
BEYOND





BEFORE:
NOOK AND HALL
LOOKING SOUTH



AFTER:
RENOVATED NOOK AND
GALLERY WITH MINIMAL
ALUMINUM CLAD WINDOWS
AND NEUTRAL FINISHES



AFTER:
RENOVATED LIVING ROOM
LOOKING EAST WITH NEW
LARGE WINDOWS AND
FIREPLACE ART PIECE BY
OWNER



AFTER:
RENOVATED KITCHEN
LOOKING SOUTHWEST

ZAGUAN LOOKING EAST
ALONG ENTRY AXIS
WITH BARN DOOR
DETAIL IN FOREGROUND



Honor Award

Small Architectural Project

Wilway Addition

Sam Sterling Architecture



Wilway Addition
EXISTING FAÇADE



Wilway Addition
NEW FAÇADE

Wilway Addition
EXISTING KITCHEN





Wilway Addition

Albuquerque, New Mexico 2015



Wilway Addition
NEW KITCHEN





Wilway Addition
PATIO



Wilway Addition
LIVING ROOM ADDITION



Wilway Addition
KITCHEN

